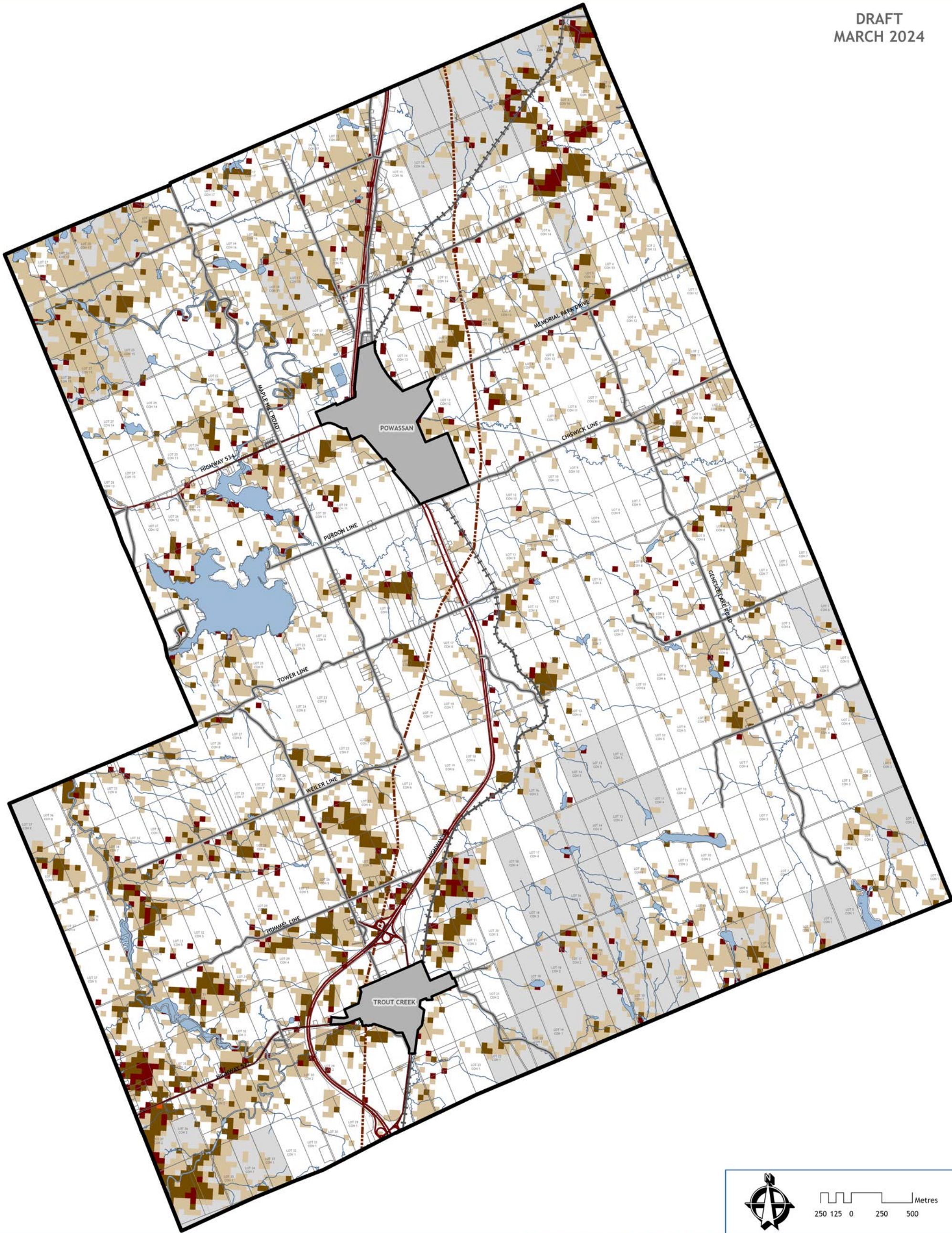


DRAFT

MARCH 2024



WILDLAND FIRE - MNR

- EXTREME
- HIGH
- NEEDS EVALUATION
- MODERATE

- CROWN LAND
- POWASSAN URBAN SERVICE AREA
- TROUT CREEK SETTLEMENT AREA

- PROVINCIAL HIGHWAY
- MUNICIPAL ROADS
- PIPELINE
- RAILWAY
- STREAMS / RIVERS
- WATERBODIES

Hazardous forest types for wildland fire means forest types assessed as being associated with the risk of high to extreme wildland fire.

Ontario Geohub Fire - Potential Hazardous Forest Types for Wildland Fire is intended to help inform where further assessment is required and is to be used in conjunction with guidance from the Ministry of Natural Resources and Forestry.

Data is updated on an annual basis.

Source: [https://ws.gisettl.lrc.gov.on.ca/fmdata/download/Packages/HazardousFuels\\_2023\\_AllPackages.zipd57f78b5d88a](https://ws.gisettl.lrc.gov.on.ca/fmdata/download/Packages/HazardousFuels_2023_AllPackages.zipd57f78b5d88a)

The information displayed on this map has been compiled from various sources. While every effort has been made to accurately depict the information, this map should not be relied on as being a precise indicator of locations.

Copyright The Municipality of Powassan, 2023. All rights reserved.

May not be reproduced without permission. This is not survey data.

PLANScape

BUILDING COMMUNITY THROUGH PLANNING